

## Ground Penetrating Radar

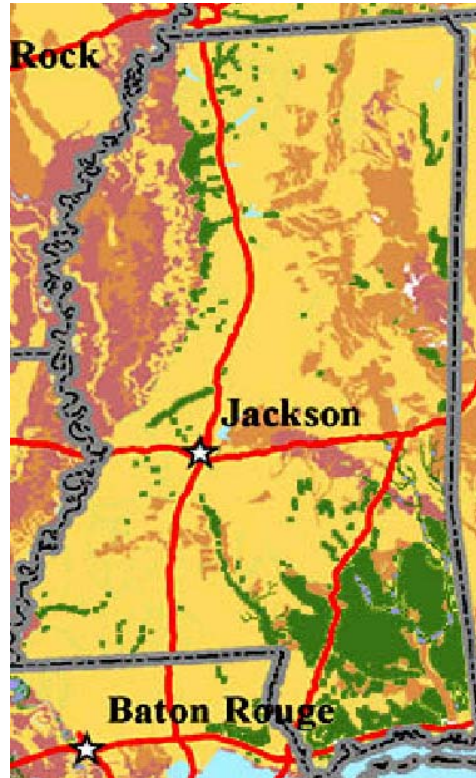
MsRWA uses the Easy Locator from MALA to detect both metallic and non-metallic material types including plastics, concrete, ceramics, asphalt composite and more.

The Easy Locator does not work well in all soil types.

See map.



## Mississippi Suitability for GPR Applications



GPR Suitability Index	Potential for GPR Applications
0 - 1	High
1.1 - 2	
2.1 - 3	Moderate
3.1 - 4	
4.1 - 5	Low
5.1 - 18	Unsuited
No Data	
State Boundaries	
Interstate Highways	
State Capitals	

## MISSISSIPPI RURAL WATER ASSOCIATION

5400 N Midway Road  
Raymond, MS 39154

Phone: 1.800.343.2520  
Fax: 601.857.2434

E-mail: [msrwa@msrwa.org](mailto:msrwa@msrwa.org)

## MISSISSIPPI RURAL WATER ASSOCIATION

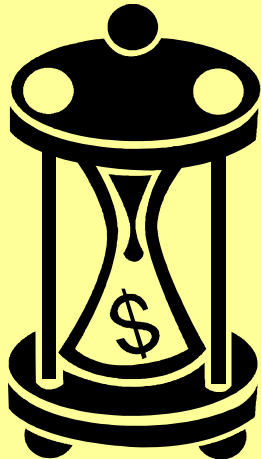
## Ground Penetrating Radar for Utility Locating



Call 1.800.343.2520  
to Schedule a  
locate.

## Ground Penetrating Radar

When locating  
underground  
utilities time is  
money.



## MsRWA Locating Service

If you are interested in the Mississippi Rural Water Association's locating service, please fill out the right portion of this brochure and fax to 601.857.2434 or call 1.800.343.2520.

### Charges:

Monday - Friday \$50.00 per hour

Weekends/Holidays \$100.00 per hour

Minimum : 1 hour plus travel

Must have a staff member present during locates.

## System Information

System: \_\_\_\_\_

Contact Person: \_\_\_\_\_

Address: \_\_\_\_\_

City/ST/Zip: \_\_\_\_\_

Phone: \_\_\_\_\_

Cell: \_\_\_\_\_

Fax: \_\_\_\_\_

Best time to contact: \_\_\_\_\_

**MISSISSIPPI RURAL WATER  
ASSOCIATION**

**5400 N Midway Road  
Raymond, MS 39154**

**Phone: 1.800.343.2520**

**Fax: 601.857.2434**

**E-mail: [msrwa@msrwa.org](mailto:msrwa@msrwa.org)**